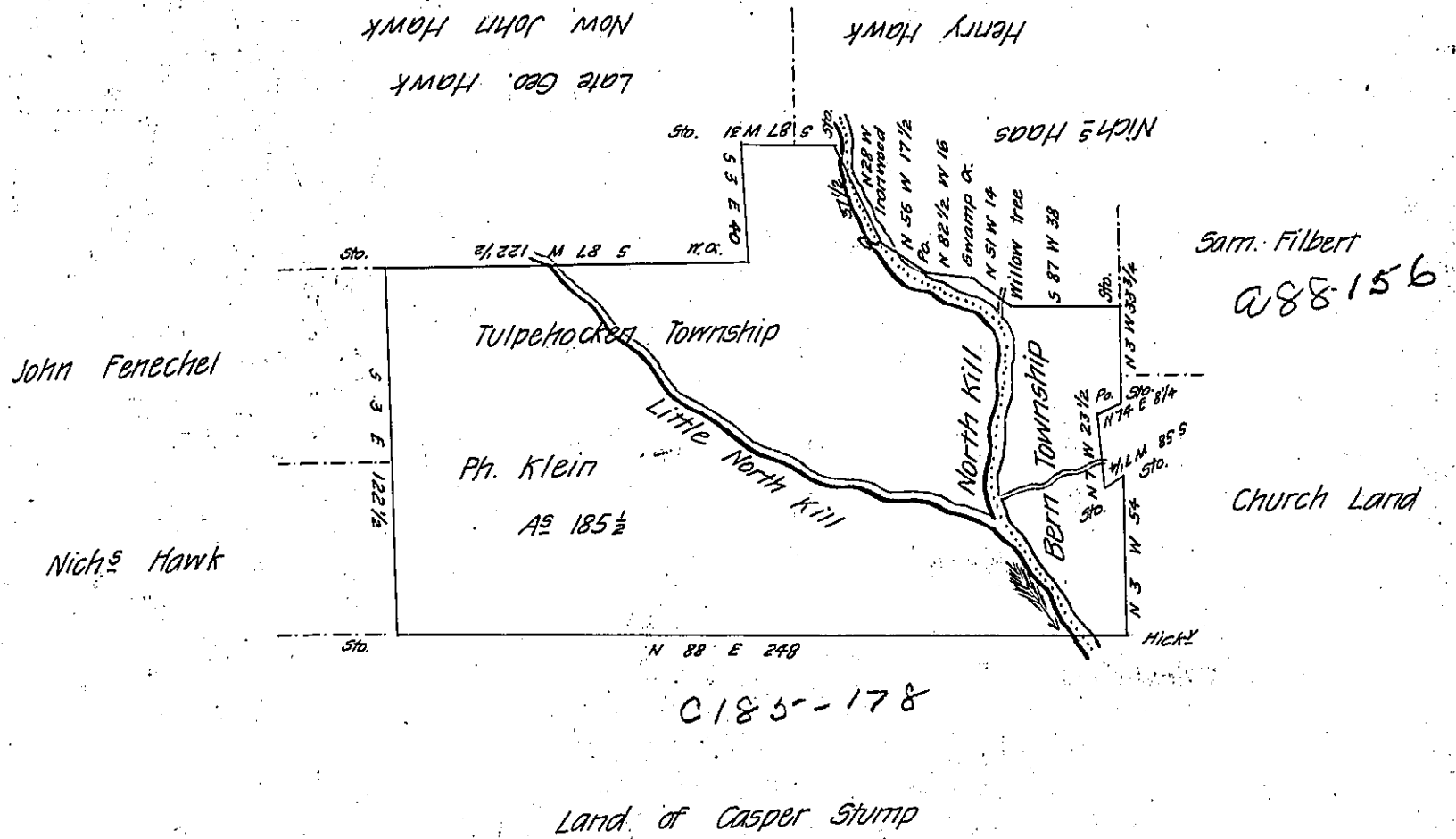


FORM No. 1.



*Draught of a tract or piece of land Situate in Tulpehocken and Bern Town-
 ship's Berks County Containing one hundred & eighty five acres and a half and allowance
 of six P. Cent. (It being part of As. 2113 1/4 Originally Survey'd to Henry Spingler in pursu-
 ance of a warrant granted to him dated the third day of June A.D. 1736.) Resurvey'd
 the above at the request of Philip Klein on the twenty seventh day of December A.D. 1803
 Henry M. Richards D.S.
 To Samuel Cochran Esq.
 Surveyor General.*

*IN TESTIMONY that the above is a copy of the original remaining on file in
 the Department of Internal Affairs of Pennsylvania, made
 conformably to an Act of Assembly approved the 16th day of
 February 1833, I have hereunto set my hand and caused
 the Seal of said Department to be affixed at Harrisburg,
 this twenty fourth day of January 1907*

George B. Brown
 Secretary of Internal Affairs.